

## CAN DI Self test

Please confirm the connection among OBD interface, candi main cable, GM and power is correct. When test candi, you must provide power from OBD connector, please refer to the following picture.



1.



2.

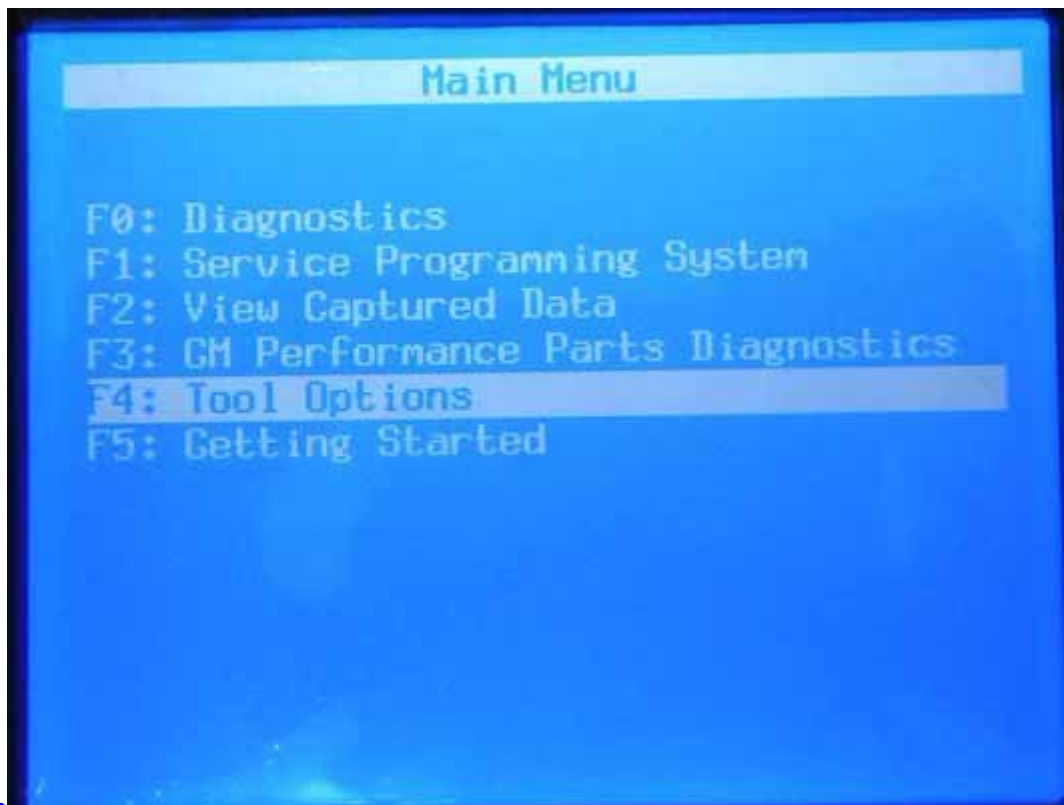


3.

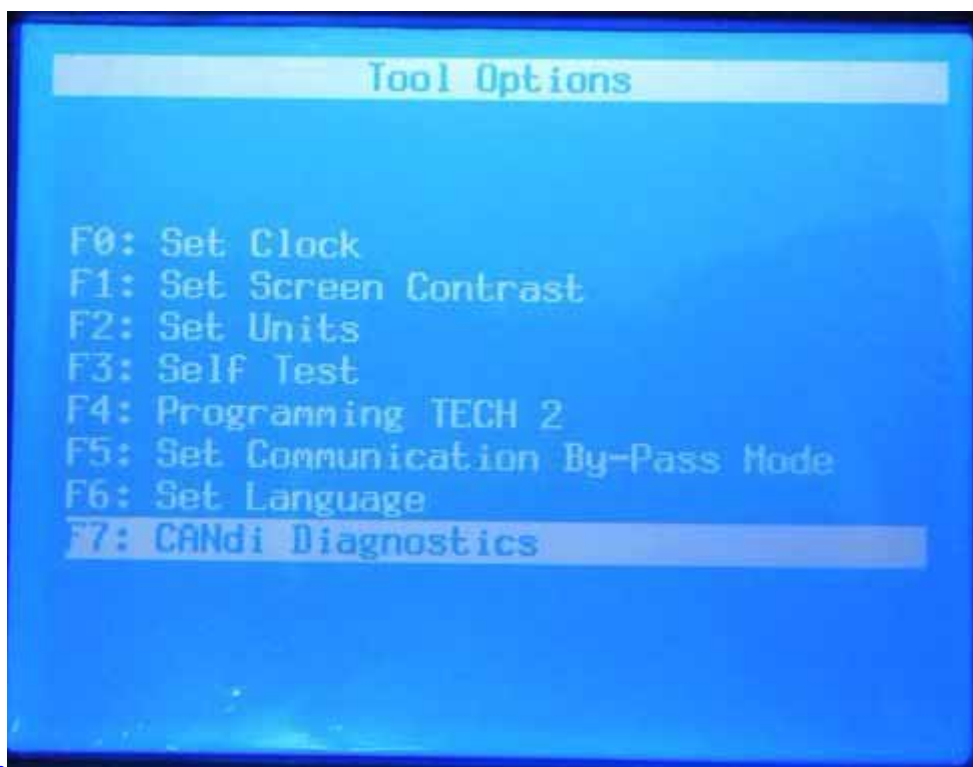


4.

5.



6.





7.



8.

9.



10.



Mark: there are two kinds of CANDI self test, please refer to the picture NO.8 and NO.10.